

Enhancing European disaster resilience

Recent events have shown gaps in the level of preparedness of European society for disasters.

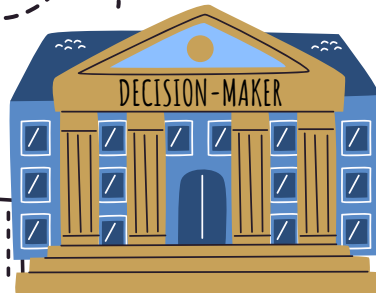
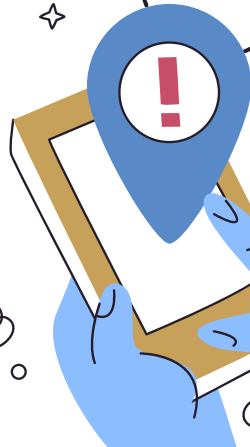


In line with the Sendai Framework, the **Societal Resilience Cluster (SRC)** is working towards increasing risk awareness and hence resilience among people, public services, and decision-makers.



To this end, the SRC is developing the following solutions:

- ▶ An online community centre with knowledge and resources on social media and crowdsourcing in disasters 



▶ An online knowledge platform of solutions for improving interactions between first responders, citizens and public authorities 

▶ A Decision Support System for disaster risk management

▶ A consolidated, common European understanding of disaster resilience



▶ Policy recommendations to strengthen community preparedness for improved disaster resilience

▶ Online service platform to help reduce dynamic risk scenarios and systemic vulnerability caused by multi-hazard disasters



Visit our websites * to discover how we are enhancing European societal resilience.



euproject-core.eu



riskpacc.eu



mediate-project.eu



buildersproject.eu



paratus-project.eu



links-project.eu



project-engage.eu



resilocproject.eu



horizonresultsbooster.eu

This factsheet has been produced by ICONS in the context of the Horizon Results Booster services delivered to LINKS (GA N. 883490), ENGAGE (GA N. 882850), RiskPACC (GA N. 101019707), CORE (GA N. 101021746), MEDIATE (GA N. 101074075), PARATUS (GA N. 101073954), BUILDERS (GA N. 833496) and RESILOC (GA N. 833671). This product does not reflect the views of the European Commission.

